

technical requirements for large format print






AGENCJA REKLAMOWA



GENERAL RULES

PREFERRED FILE FORMATS:

- 1. EPS** - CMYK color profile
- color profile: [ISOcoated_v2_300_eci](#) [download](#) 
- maximum total INK 240 (the sum of each CMYK color value can't exceed total of 240%)
- for full black please enter values as shown: C40% M40% Y40% K100%
- all fonts converted to COURVES
- in case of using a scale of 1:10 all outlines must be removed
- shadows converted to CMYK bitmaps
- bitmaps (photos) must use CMYK colors
- 2. TIFF** - CMYK color profile
- color profile: [ISOcoated_v2_300_eci](#) [download](#) 
- maximum total INK 240 (the sum of each CMYK color value can't exceed total of 240%)
- for full black please enter values as shown: C40% M40% Y40% K100%
- no layers, masks and/or paths included
- for PC (32 bits)
- LZW compression
- 3. PDF** - CMYK color profile
- color profile: [ISOcoated_v2_300_eci](#) [download](#) 
- maximum total INK 240 (the sum of each CMYK color value can't exceed total of 240%)
- for full black please enter values as shown: C40% M40% Y40% K100%
- all fonts converted to COURVES
- in case of using a scale of 1:10 all outlines must be removed
- shadows converted to CMYK bitmaps
- bitmaps (photos) must use CMYK colors
- 4. CDR** - files in CorelDraw format are NOT preferred due to significant differences in colors and shadow effects.

RESOLUTION:

1. Scale 1:1

- according to size of the project use a resolution [dpi] as shown in the table below TAB.1

[dpi]	1m	2m	3m	4m	5m	6m	7m	8m	9m	10m
1m	150	120	100	80	72	72	60	50	40	40
2m	120	100	100	72	72	60	60	50	40	40
3m	100	100	72	60	60	60	50	50	40	40
4m	80	72	60	60	60	50	50	50	40	40
5m	72	72	60	60	50	50	50	40	40	40
6m	72	60	60	50	50	50	50	40	40	40
7m	60	60	50	50	50	50	40	40	40	40
8m	50	50	50	50	40	40	40	40	30	30
9m	40	40	40	40	40	40	40	30	30	30
10m	40	40	40	40	40	40	40	30	30	30

TAB.1 - Resolution in dpi according to size of the project.

2. Scale 1:10

- basing on TAB.1 multiply the resolution in dpi by 10-times

technical requirements for large format print



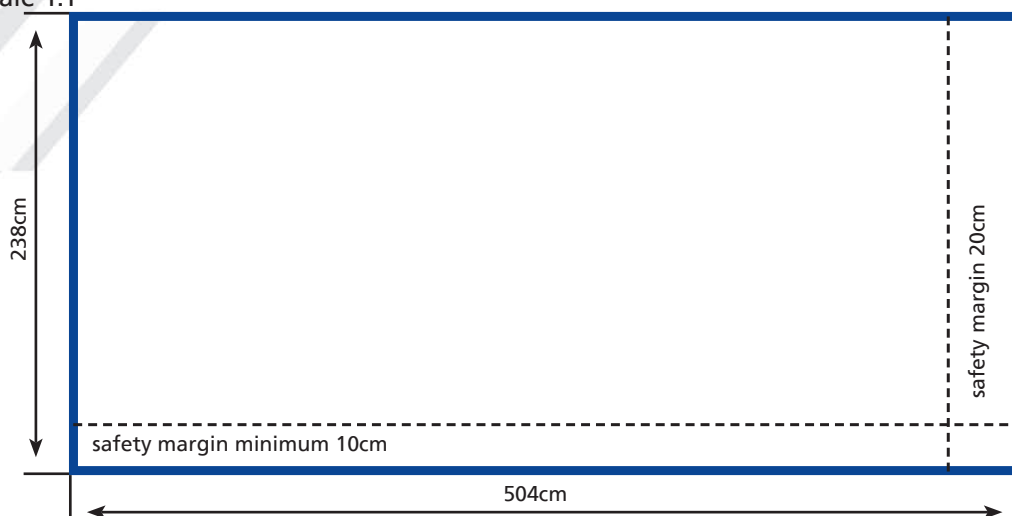
AGENCJA REKLAMOWA



BILLBOARDS

SIZE:

1. Billboard size 504 x 238cm
- scale 1:1



RYS.3 - Drawing shows the billboard in size 504x238 cm in scale 1:1 with marked safety margins

- safety margin - it's an area, that can be cut during the process of bonding the poster to a billboard due to extensibility of the paper. You cannot place any significant elements in this area, such as texts, logotypes, contact informations etc. The correct way to design a billboard is shown in the picture below RYS.4



RYS.4 - An example for billboard with correct use of safety margins

technical requirements for large format print



AGENCJA REKLAMOWA



BILLBOARDS

SIZES:

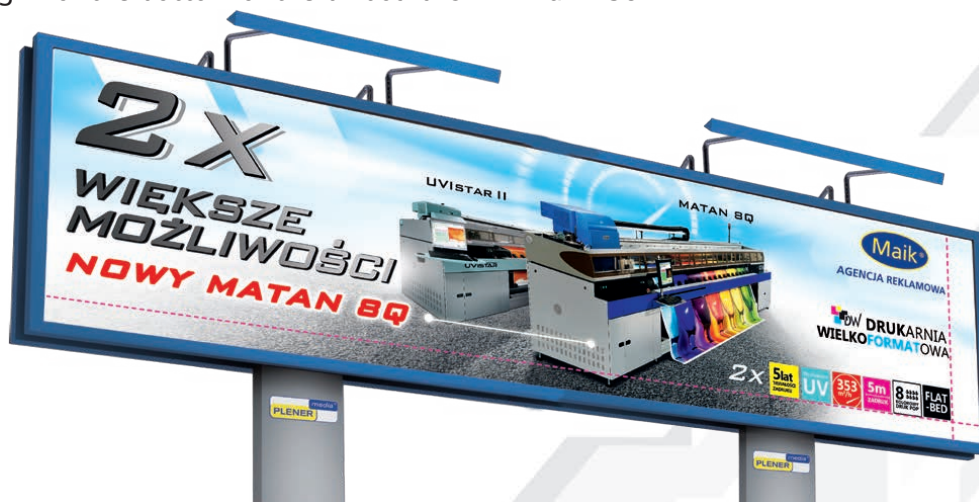
2. Billboard size 600 x 300cm

- scale 1:1
- safety margin for the right side of the billboard is 25cm
- safety margin for the bottom of the billboard is minimum 12cm



3. Billboard in size 1200 x 300cm

- scale 1:1
- safety margin for the right side of the billboard is 40cm
- safety margin for the bottom of the billboard is minimum 15cm



technical requirements for large format print



AGENCJA REKLAMOWA



CITYLIGHT

SIZE:

1. Citylight in size 120 x 180 cm
 - scale 1:1
 - safety margins on each side is 5cm



DELIVERING THE FILES FOR PRINT

FTP:

<http://ftp.maik.pl>

login: ftp

password: ftp(1995)

Maik Agencja Reklamowa Sp. z o.o. Sp. K. cannot be hold responsible for any errors in the content of designs received from the customers and errors that may occur due to incorrect preparation of files for printing (eg. not respecting the safety margins, fonts not converted to curves, low resolution, incorrect colors after using different than CMYK colors, wrong profile attached to the file and differences in colors due to differences in display between each computer screen).